

OPERATING INSTRUCTIONS

Single Spindle Mixer Model No. SMW-C, -CF



TABLE OF CONTENTS	PAGE
Installation	2
Operating	2
Cleaning	2
Proper Maintenance	2

LIMITED WARRANTY

This product is warranted to be free from defects in material and/or workmanship for a period of 1 year from date of original installation, not to exceed 18 months from date of shipment from our factory.

Any component which proves to be faulty in material and/or workmanship will be replaced or repaired (at the option of Sterling MultiProducts, Inc.) without cost to the customer for parts or labor.

This warranty is subject to the following exceptions/conditions:

Use of any non-genuine SMP parts voids this warranty. All genuine SMP replacement spare parts are warranted for ninety (90) days from date of purchase.

- Damage caused by carelessness, neglect, and/or abuse (e.g., dropping, tampering or altering parts), equipment damaged in shipment, by fire, flood or an act of God is not covered under this warranty.

SPECIFICATION

SMW-C, -CF	Dimensions
Width	4" (55.88 cm)
Depth	6" (55.88 cm)
Height	12" (58.92 cm)
Shipping Weight	12lbs. (5.44 kg.)

ELECTRICAL

SMW-C	SMW-CF
Wall Mounted	Wall Mounted
110-120 VAC	220 V
60 Hz	50-60 HZ
Two-speed switch & motor	Two-speed switch & motor
10,000 & 15,000 RPM	10,000 & 15,000 RPM



326 W 5TH STREET · PROPHETSTOWN, ILLINOIS 61081
 PHONE: (815) 537-2381 · FAX: (815) 537-2335
 TOLL FREE: 1-800-323-8580

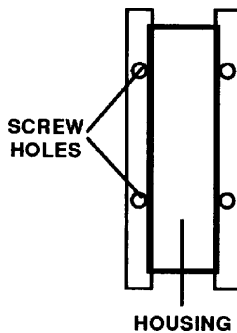
INSTALLATION

1. After you have removed the mixer from the carton, inspect the unit for signs of damage. If there is damage to the unit:
 - Notify carrier within 24 hours after delivery.
 - Save carton and packing materials for inspection purposes.
 - Contact your local dealer or if purchased directly the Sterling MultiProducts Customer Sales Department at 1-800-323-8580 to arrange for a replacement to be sent.
2. Verify that all parts have been received.



CAUTION: The stainless steel spindle is machined. Ground care must be taken so it will not be damaged. Severe impact and undue pressure can put the spindle out of alignment and balance, making it inoperable at high speeds. When lifting or mov-

figure 1



ing the mixer, do not touch the spindle.

3. Using the four holes on the side of the stainless-steel mixer housing as a template, mark the surface where mixer is to be mounted. Use the mounting hardware provided. See figure 1.
4. Plug mixer into the appropriate outlet. See Electrical Specifications.

OPERATION

Your mixer is equipped with an automatic starting switch which starts the motor when a drink container is placed in position.

IMPORTANT: If the container is removed rapidly from the spindle when the drink is finished, very little of the drink will adhere to the agitators.

1. Place the product into the cup.
2. Place the cup on to the cup catch bracket and lift up until the motor turns on. The spindle will run four seconds then automatically shut off. Release the cup from the cup catch bracket and remove it from the mixer.

CLEANING

To clean, simply wipe mixer head with a damp cloth.

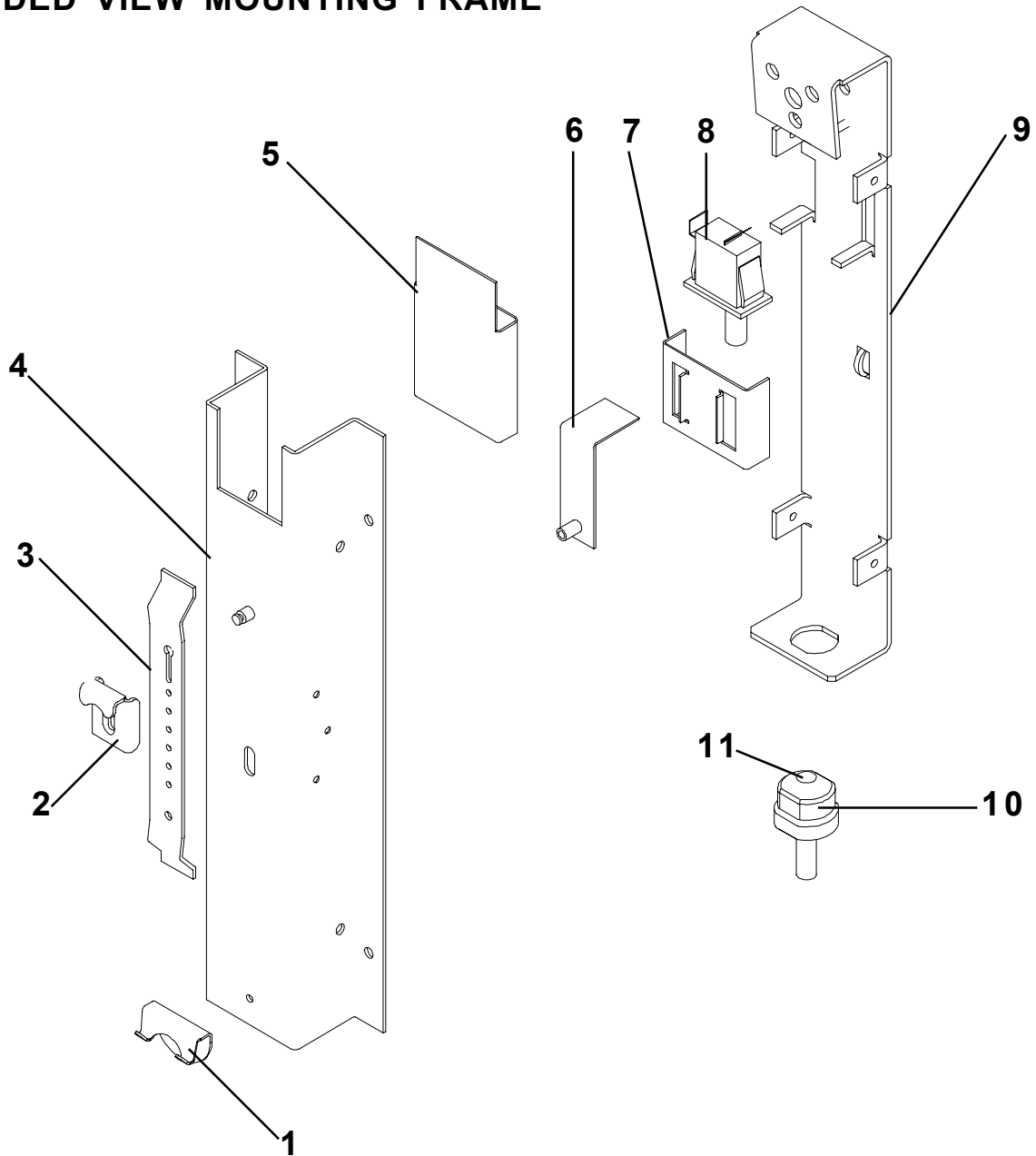


CAUTION: Care must be taken to prevent water and cleaning material from entering the motor housing. This will cause damage to the electrical system.

PROPER MAINTENANCE

Unless the mixer is damaged, it requires very little maintenance other than cleaning. The spindle shaft rotates on sealed ball bearings which do not require lubrication. If the spindle slows down during operation then the brushes must be replaced.

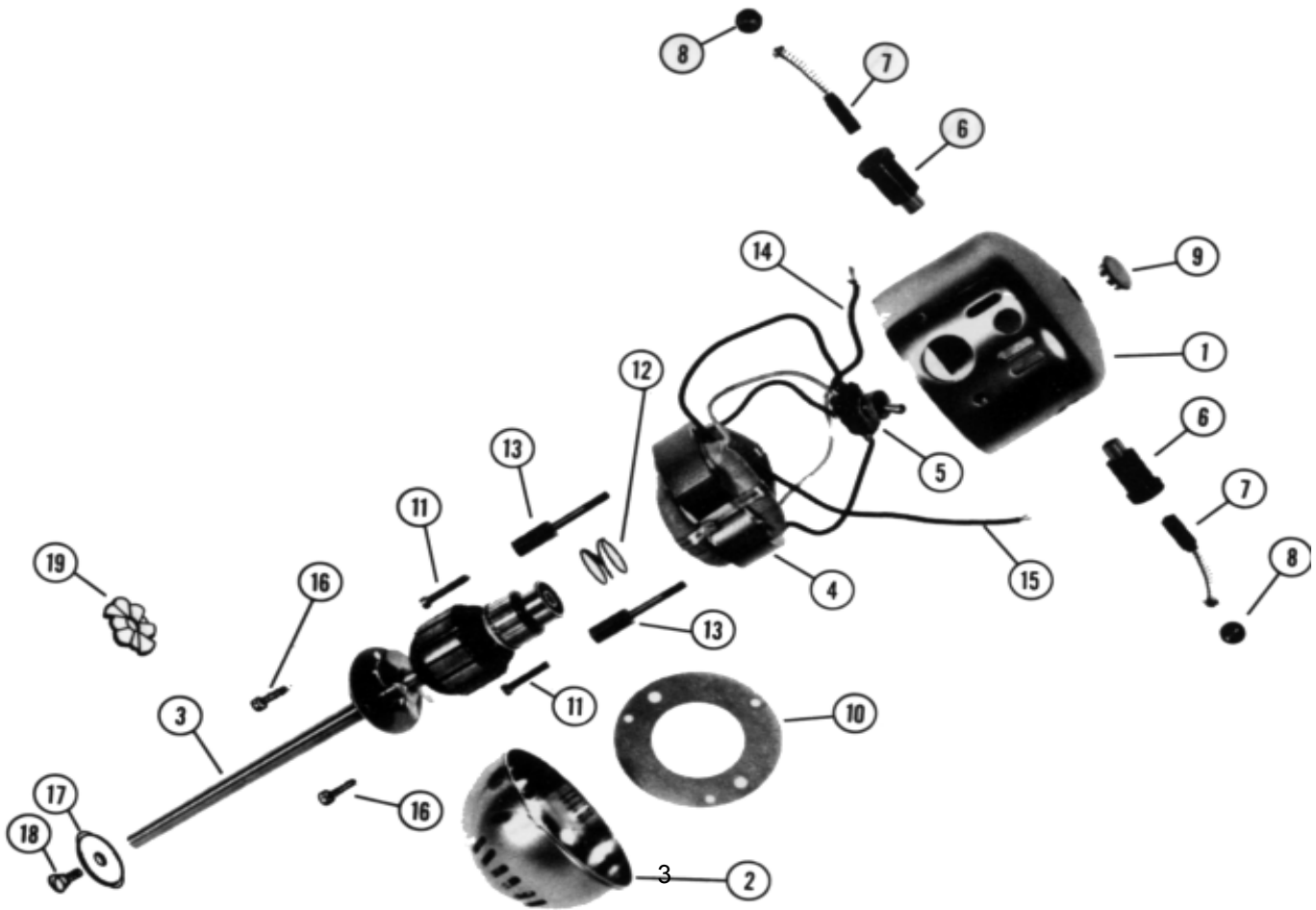
EXPLODED VIEW MOUNTING FRAME



PARTS LIST

ITEM	PART NO.	DESCRIPTION
1	SMW-99	Lower Cup Catcher
2	SMW-100	Upper Cup Catcher
3	SMW-101	Cup Adjuster Bar
4	SMW-104	Cover Assembly
5	SMW-9	Insulation
6	SMW-106	Switch Actuator Assembly
7	SMW-98	Switch Actuator Support
8	78-042	Switch
9	SMW-105	Chassis Assembly
10	SMW-33	Line Cord
11	66-006	Strain Relief

PARTS LIST FOR MODEL SM-22 DRINK MACHINE SPINNER HEAD



PARTS LIST

ITEM	PART NO.	DESCRIPTION
1	SMW-17	Upper Motor Housing
2	SMW-18	Lower Motor Housing
3	SMW-19 (110V) SMW-19F(220V)	Spindle and Armature Assembly (includes bearings and bearing retainer)
4	SMW-20 (110V) SMW-20F (220V)	Field Coil
5	SMW-21	Toggle Switch
6	SMW-22	Brushholder (2 required)
7	SMW-23	Brush, Shunt, and Spring Assembly (2 required)
8	SMW-24	Brush Retainer Cap (2 required)
9	SMW-25	Hole Plug
10	SMW-26	Fan Baffle
11	SMW-27	Motor Assembly Screw (2 required)
12	SMW-28	Bearing Loading Spring
13	SMW-29	Field Coil Retaining Screw (2 required)
14	SMW-30	Short Brush Wire with Push-in Terminal
15	SMW-31	Long Brush Wire with Push-in Terminal
16	SMW-32	Bearing Retainer and Fan Baffle Screws (6 required)
17	SMW-42	Bottom Agitator (Soft Ice Cream)
18	SMW-44	Bottom Agitator Screw
19	SMW-43	Spindle Agitator
20	SMW-45	Hard Ice Cream Agitator (Not Shown)